

Genesis Décor

durable, attractive, and easily installed décor for micro markets,
office coffee service and vending areas



About Genesis Décor

We specialize in designing and manufacturing durable, attractive, and easily installed area décor and cabinetry for micro markets, office coffee service and vending areas. We make your installation not only beautiful, but quick and easy because our units are shipped 90% preassembled.

We have built our business on exceptional customer service and work diligently to keep our customers pleased. Our goal is to always exceed your expectations!

Genesis Décor employs more than 25 people and we ship to the contiguous United States and to Canada. Our forty thousand square-foot facility is located in Amelia, Virginia, just 35 miles southwest of Richmond.

Table of Contents

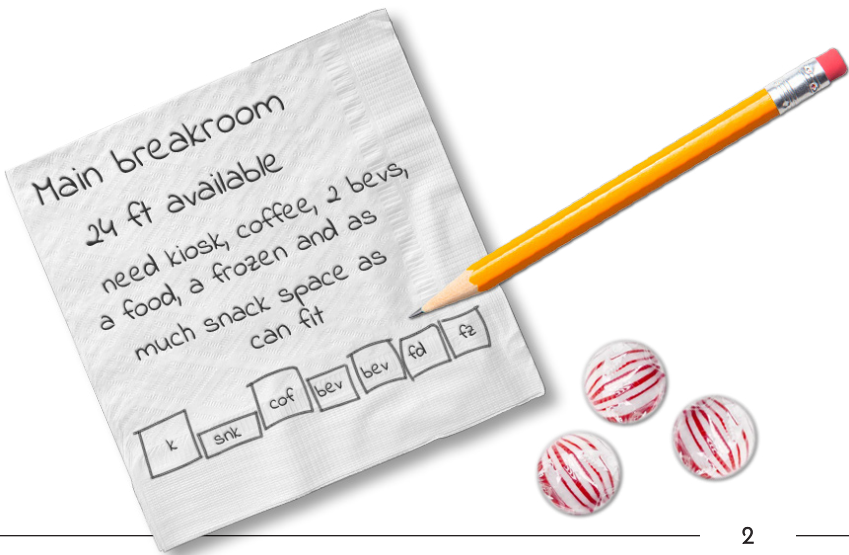
Micro Market Cabinetry	
Basics 80 and Nano	4
Markets 90	6
RTS	8
Elite	10
Office Coffee Service	12
Market Accessories	14
Header Graphics for Micro Market Cabinetry	16
Vending Area Décor	18
Submitting Rendering/Quote Requests ..	Back Cover



Our Design Services

We provide renderings and dimensioned layouts so you can build your sales pitch and focus on what your customer cares about. Ask us about our graphics options or let us custom design graphics for your markets.

We are your design department. Nothing is more powerful for sharing your concept than a picture. Many times, it is difficult for a customer to understand your ideas, or to visualize what you are trying to convey.



Let us work for you. From concept to final renderings, we are your sales partner. We will guide you through the process, helping you determine what setups would work best as we explore all the options.

It costs you nothing! We provide dimensioned layouts and full-color, photo-like renderings. It's part of what we do for our customers. We understand that we all win when you make a sale. Let us be a partner on your next project.

Cabinetry Color Options and Material Information

Most of our millwork is made from thermally fused laminates (TFL) on a particleboard core and our countertops are made with high-pressure laminate on plywood. We stock 10 popular colors (Black, Black Pine, Carolina Steel, Mahogany, Pewter Pine, Storm, Toasted Oak, Velvet Ash, Walnut and White) and three countertop color options (Jamocho Granite, Perlato Granite, and White Carrara).



Black

Melamine: Egger TFL U999 ST7 Black

Countertop: Formica 3522 Perlato Granite



Black Pine

Melamine: Egger H3081 ST22 Black Havana Pine

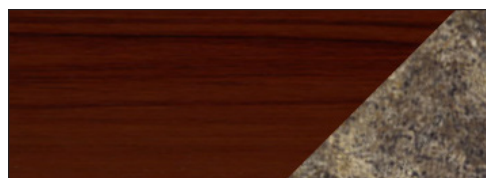
Countertop: Wilsonart White Carrara 4924-38



Carolina Steel

Melamine: Arauco Prism TFL AF210 Silver Frost

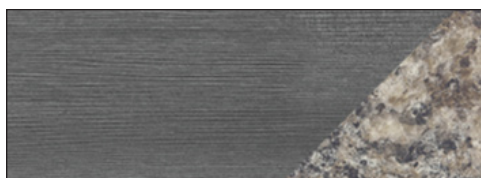
Countertop: Formica 3522 Perlato Granite



Mahogany

Melamine: Arauco Prism TFL WF220 Brazilian Walnut

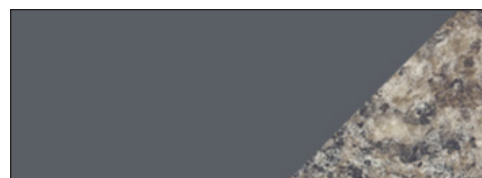
Countertop: Formica 7734 Jamocha Granite



Pewter Pine

Melamine: Arauco Prism TFL WF377 Pewter Pine

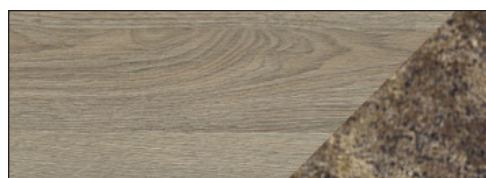
Countertop: Formica 3522 Perlato Granite



Storm

Melamine: Arauco Prism TFL SF239 Storm

Countertop: Formica 3522 Perlato Granite



Toasted Oak

Melamine: Arauco Prism TFL WF447 Toasted Oak Boreal Finish

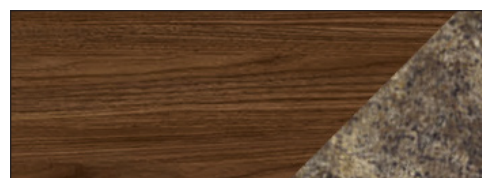
Countertop: Formica 7734 Jamocha Granite



Velvet Ash

Melamine: Arauco WF450 Bergen Ash Velvet Finish

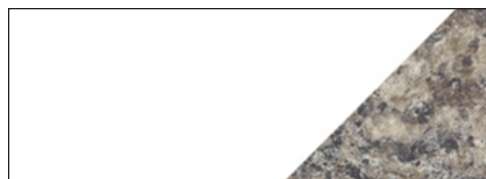
Countertop: Formica 7734 Jamocha Granite



Walnut

Melamine: Arauco WF476 Wright Walnut Boreal Finish

Countertop: Formica 7734 Jamocha Granite



White

Melamine: Egger W1050 ST14 Coastal White

Countertop: Formica 3522-58 Perlato Granite

Request Samples

Printed color samples will vary from the actual product. To request samples, complete and submit the form at www.genesisdecor.com/colors/request.html or ask your sales representative. Samples will arrive in a 12"x4"x4" box via UPS. Please allow one to two weeks for shipping.



Basics 80 and Nano – Simple and Compact

Our Basics 80 and Nano cabinets are simple and compact, perfect where space is minimal. These cabinets provide the basics needed in the most economical setup we offer. At 80"H, the cabinets are the same height as most coolers. Create a setup with these cabinets sitting beside one or more coolers, and you have an affordable setup that meets all the functionality required of a micro market.

These cabinets come preassembled, just hang the hardware and they are ready to go! The cabinets are available with or without graphics on the 8"H built-in headers. Puck lighting, baskets, pegs and shelving may be added/adjusted as needed.

M80 Kiosk/Coffee Cabinets

The standard sizes are 37"W and 49"W with countertops at 27.5"H. Standard depths are 24"D and 32"D. Widths, depths and countertop heights may be adjusted as needed. These cabinets are available in open bottom with shelves or locking bottom storage.

Upper mounted slatwall or slatgrid panels with baskets, pegs and/or shelves may be added.

A floor-model kiosk cabinet is 28.5"W x 24"D and includes one loose shelf.



M80 Microwave Cabinets

At 24"D, microwave cabinets are available at 26.5"W to hold two microwaves, and 50.5"W to hold four microwaves.

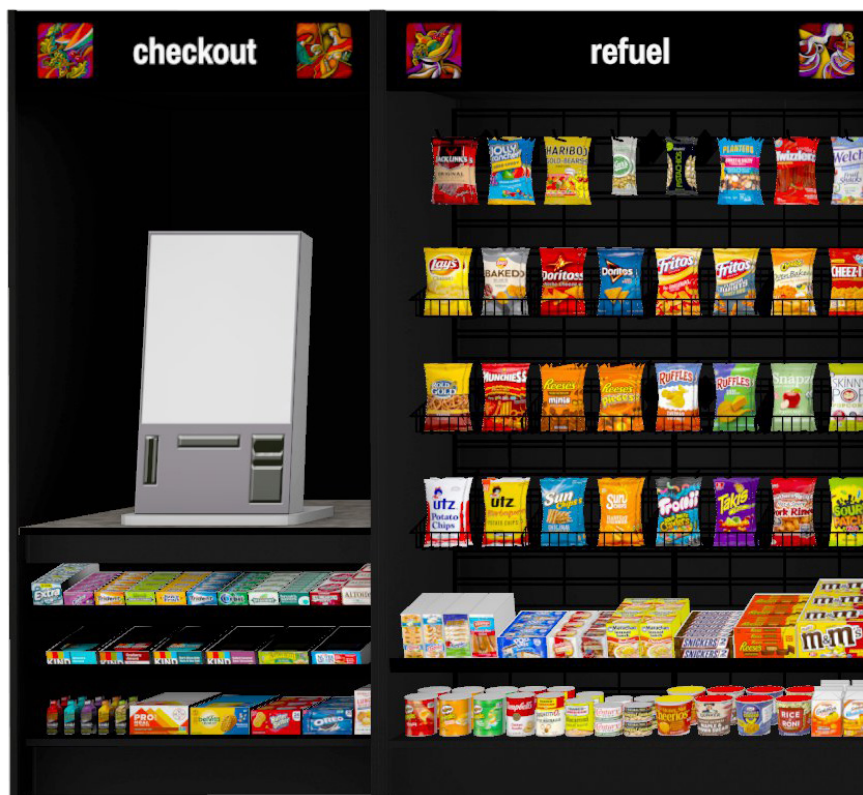
Standard or
with locking bottom
storage, all come
with black four-
compartment cutlery/
condiment bins.



Deck Out Your Markets!

We offer a variety of options to accessorize any area décor ... from snack displays to cubby units, lighting and much more. See Page 14 for details.

Choose from our graphic options shown on Page 16, add a logo, or let us create a custom design for your markets.





M80 Snack Cabinets

The Basics 80 snack cabinets are 24"D and are available in three widths: 26.5"W, 38.5"W and 50.5"W. They come standard with 12" pegs, three rows of baskets and one shelf with black offset trim.

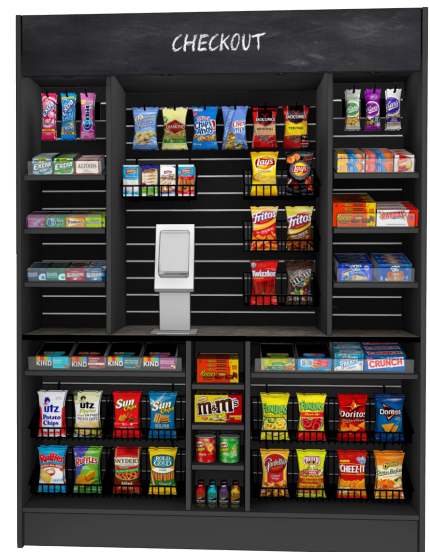
Trade out the slatgrid for a slatwall-backed cabinet and adjust the configuration of pegs, baskets and shelves as needed. Shelves with lexan stops also are available.

Nano Kiosks and Coffee

Nano kiosk cabinets are designed to provide everything needed for a small market in one cabinet with space for the kiosk, impulse items, and snacks. Add a cooler and your market is complete.

At 80"H, Nanos are designed to work with standard coolers to provide an entire market in one cabinet. With upper storage behind the 9"H locking header, premium slatwall, baskets, pegs, and shelves with lexan stops, this all-in-one solution hits the mark. Available with or without graphics, and in two widths, 48" and 60", the Nano provides that perfect answer to small market concerns.

A 42"W x 29"D coffee unit with a built-in trash liner is available as well.



Markets 90 – The Go-To Décor Option

Markets 90 is the workhorse of our décor offerings. At 90"H, this line provides the height needed to allow headers over the coolers, offering a totally enclosed market with full graphics options. The core cabinets are self-contained with the headers built in.

These cabinets come preassembled, just hang the hardware! The cooler headers are secured between cabinets with a few screws, creating a finished, high-quality look. With their modular design, there is a great degree of flexibility in reuse. The cabinets are available with or without graphics on the 9.5"H built-in headers. Puck lighting, baskets, pegs and shelving may be added/adjusted as needed.

M90 Kiosk/Coffee Cabinets

The standard sizes are 37"W and 49"W with countertops at 27.5"H. Standard depths are 24"D and 32"D. Widths, depths and countertop heights may be adjusted as needed. These cabinets are available in open bottom with shelves or locking bottom storage.

Upper mounted slatwall or slatgrid panels with baskets, pegs and/or shelves may be added.

A floor-model kiosk cabinet is 28.5"W x 24"D and includes one loose shelf.



M90 Microwave Cabinets

At 24"D, these cabinets are available at 26.5"W to hold two microwaves, and 50.5"W to hold four microwaves.

Standard or with locking bottom storage, all come with black four-compartment cutlery/condiment bins.



Deck Out Your Markets!

We offer a variety of options to accessorize any area décor ... from snack displays to cubby units, lighting and much more. See Page 14 for details.

Choose from our graphic options shown on Page 16, add a logo, or let us create a custom design for your markets.



M90 Snack Cabinets

The snack cabinets are 24"D and are available in three widths: 26.5"W, 38.5"W and 50.5"W. They come standard with 12" pegs, three rows of baskets and one shelf with black offset trim.

Trade out the slatgrid for a slatwall-backed cabinet and adjust the configuration of pegs, baskets and shelves as needed. Shelves with lexan stops also are available.



M90 Cooler Headers & End Panels

Cooler headers may be sized to fit a variety of cooler configurations. Attach them to surrounding cabinets or add end panels to close off a bank of cabinetry. Panels are 24"D or 32"D but may be adjusted as needed.



RTS – Simple, Space-Saving and Versatile

With our RTS cabinetry, setup doesn't get any simpler. Maximize product display with this space-saving and versatile line. At 88"H, RTS cabinets provide the height needed to allow full surrounds for coolers. The cabinets are fully self-contained with the headers built in. The header faces are set back to allow for magnetic sign panels, making the signage easy to replace as needs change.

Other than the simple to assemble cooler cabinets, RTS cabinets come preassembled, just hang the hardware and signs and they are ready to go. With the modular design, there is a great degree of flexibility in reuse.

This line of cabinetry comes standard with LED lighting and shelves with lexan stops.

RTS Kiosk/Coffee Cabinets

The standard kiosk and coffee cabinets are 32.5"W x 32"D with countertops at 30"H. These cabinets are available in open or locking bottom storage. The two adjustable shelves feature lexan stops.

A 24"W x 48"H slatgrid panel and six 12" pegs are included with the hardware necessary to install if needed. Trade out the slatgrid panel for a slatwall-backed cabinet as requested.

A floor-model kiosk cabinet is 26.5"W x 22"D and includes one loose shelf.



RTS Microwave Cabinets

The microwave cabinets are 26.5"W x 24"D to accommodate two microwaves.

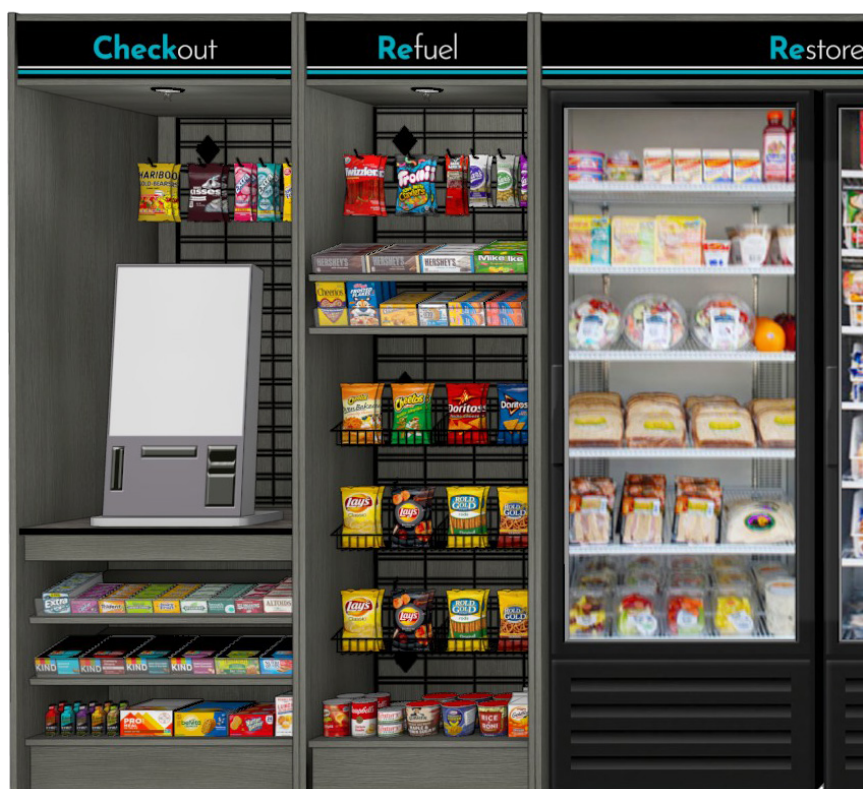
Standard or with locking bottom storage, both come with black four-compartment cutlery/condiment bins.



Deck Out Your Markets!

We offer a variety of options to accessorize any area décor ... from snack displays to cubby units, lighting and much more. See Page 14 for details.

Choose from our graphic options shown on Page 16, add a logo, or let us create a custom design for your markets.



RTS Snack Cabinets

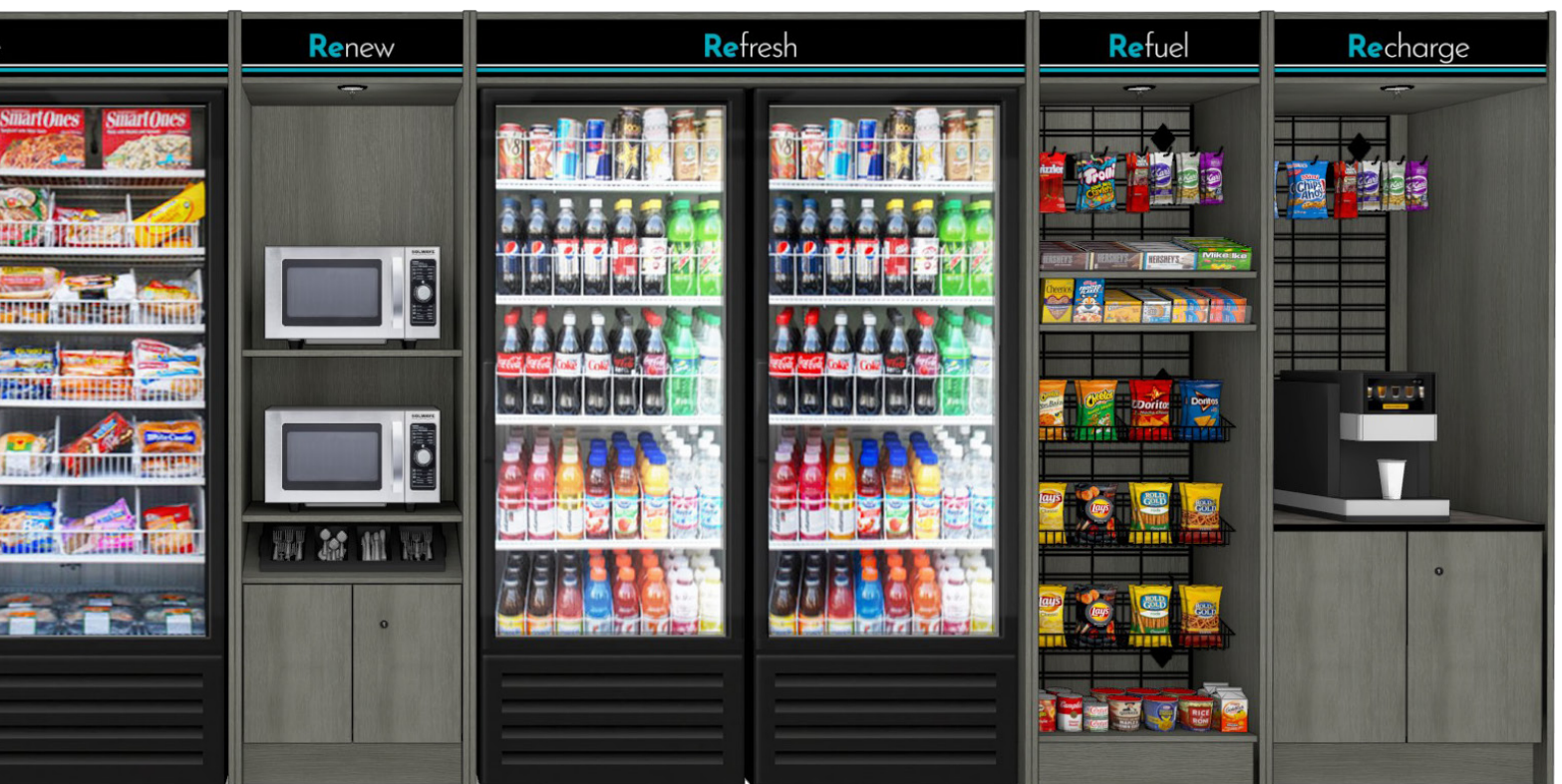
The snack cabinets are 22"D and are available in three widths: 26.5"W, 38.5"W and 50.5"W. They come standard with 12" pegs, three rows of baskets and two shelves with lexan stops.

Trade out the slatgrid for a slatwall-backed cabinet and adjust the configuration of pegs, baskets and shelves as needed.



RTS Cooler Cabinets

The cooler cabinets are flat-packed to save on shipping and are easily assembled with quick-locking connectors. At 32"D, they are available in three standard widths: 32.5"W to accommodate single-door coolers, 56.5"W for double-door coolers, and 63.5"W for two single-door coolers. These widths may be adjusted as needed.



Elite – Our Premier Line of Cabinetry

Our Elite décor offers a look that brings a sense of luxury to any space. This line stands 92"H and features dimensional headers with accent lighting behind the signage, premium slatwall, and shelves with lexan stops. The core cabinets are self-contained with the headers built in. Matching headers for over the coolers are secured between cabinets or panels using easy to assemble bolts and sleeves through predrilled holes.

Lighting is installed in the ceilings of the cabinets and behind sign panels that are offset using brushed stainless standoffs. We install premium slatwall, with aluminum inserts for enhanced durability, in the backs of kiosk, coffee, and snack cabinets. Baskets, pegs and shelving may be added/adjusted as needed.

Elite Kiosk/Coffee Cabinets

The standard sizes are 37"W and 50.5"W with countertops at 32"H with a standard depth of 28"D. Widths, depths and countertop heights may be adjusted as needed. These are available in open bottom with shelves, locking bottom storage or half locking and half open with shelves.

Slatwall backs with baskets, pegs and shelves come standard.

A floor-model kiosk cabinet is 28.5"W x 23"D and includes one loose shelf.



Elite Microwave Cabinets

At 23"D, the microwave cabinets are available at 26.5"W to hold two microwaves.

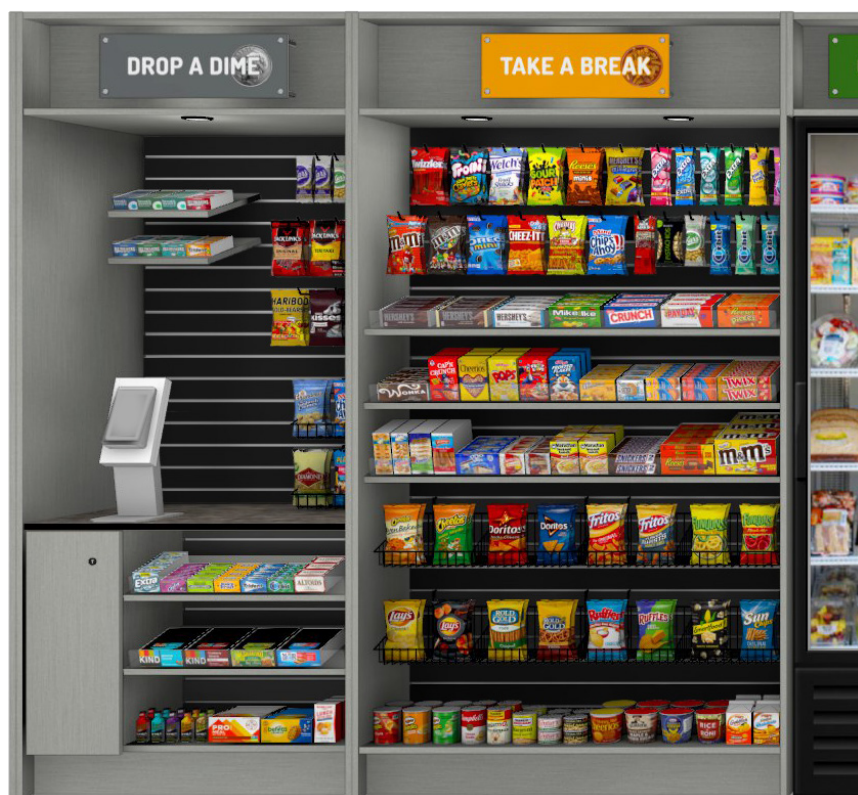
Standard or with locking bottom storage, both come with black four-compartment cutlery/condiment bins.



Deck Out Your Markets!

We offer a variety of options to accessorize any area décor ... from snack displays to cubby units, lighting and much more. See Page 14 for details.

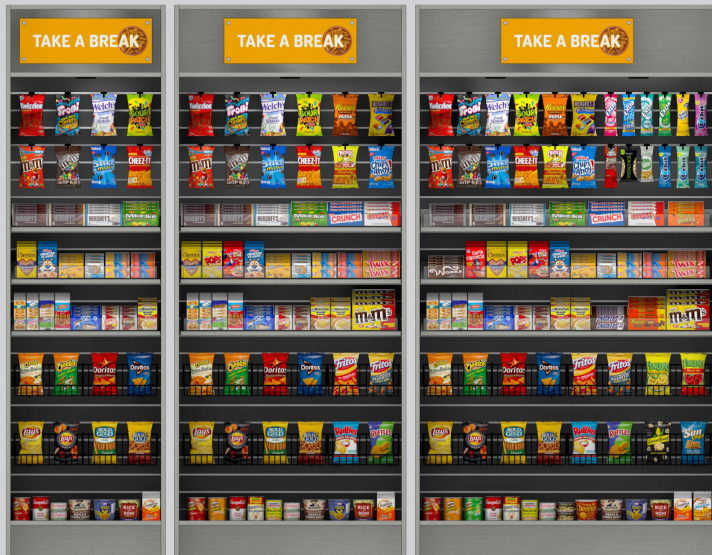
Choose from our graphic options shown on Page 16, add a logo, or let us create a custom design for your markets.



Elite Snack Cabinets

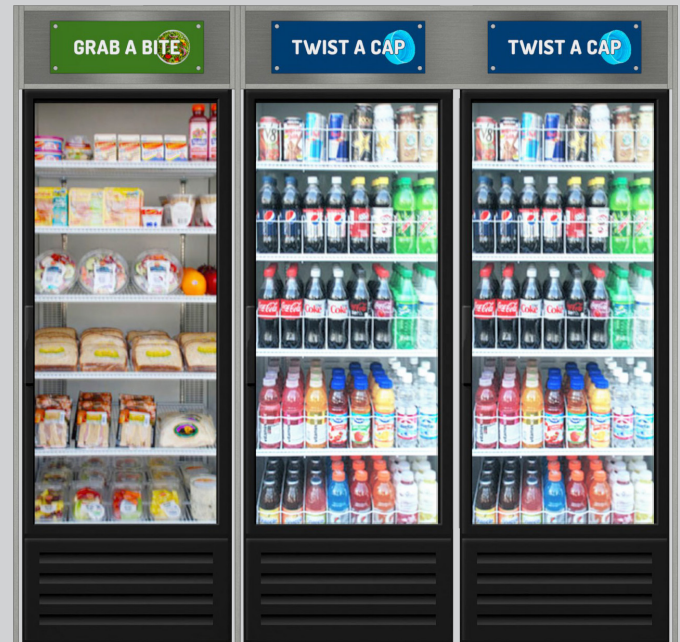
The Elite snack cabinets are 23"D and are available in three widths: 26.5"W, 38.5"W and 50.5"W. They come standard with premium slatwall, 4" and 12" pegs, two rows of baskets and three shelves with lexan stops.

Adjust the configuration of pegs, baskets and shelves as needed.



Elite Cooler Headers & End Panels

At 12"H, the dimensional headers may be sized to fit a variety of cooler configurations. Attach them to surrounding cabinets or add end panels to close off a bank of cabinetry. Panels are 24"D or 36"D but may be adjusted as needed.

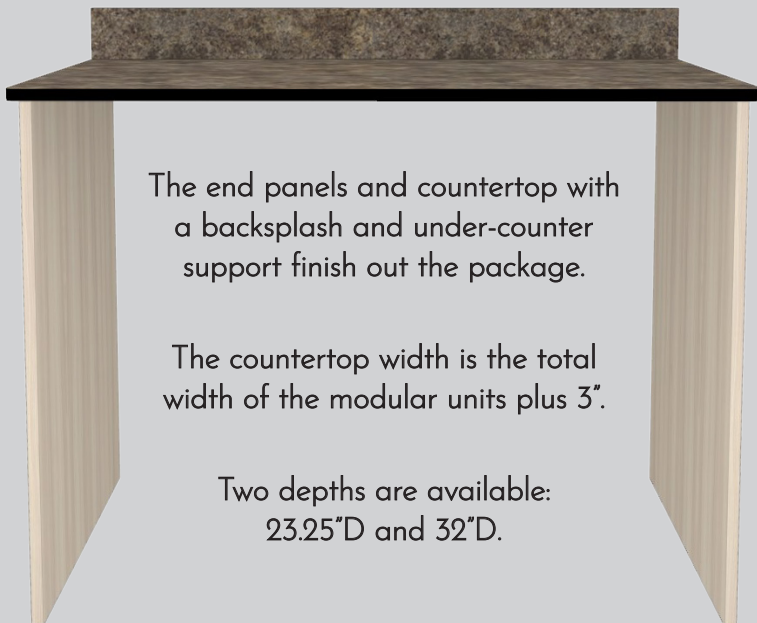


Office Coffee Service – A Modular System

Our modular office coffee system allows you to create a line-up to fit your exact needs without paying for custom designs. Bonus: they can be reconfigured or expanded as needed. These modules are easily assembled with a few male/female bolts and inserts. We offer a variety of micro market accessories, including countertop cubby units, to complement our office coffee line. See Page 14 for details.



OCS Countertops and End Panels



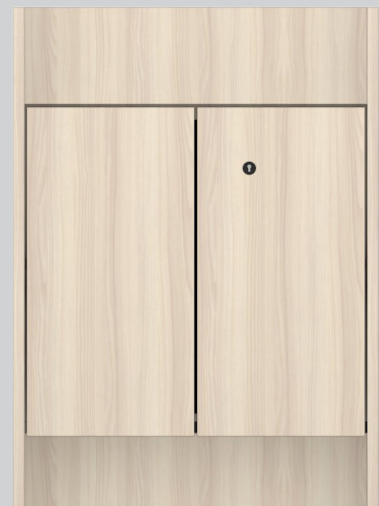
The end panels and countertop with a backsplash and under-counter support finish out the package.

The countertop width is the total width of the modular units plus 3".

Two depths are available:
23.25"D and 32"D.

OCS Locking Storage Module

This module includes one adjustable shelf. It also is available with an upper locking drawer.



OCS Trash

This module has a swing-hinged top door and a right-swinging trash door. It includes the trash liner.

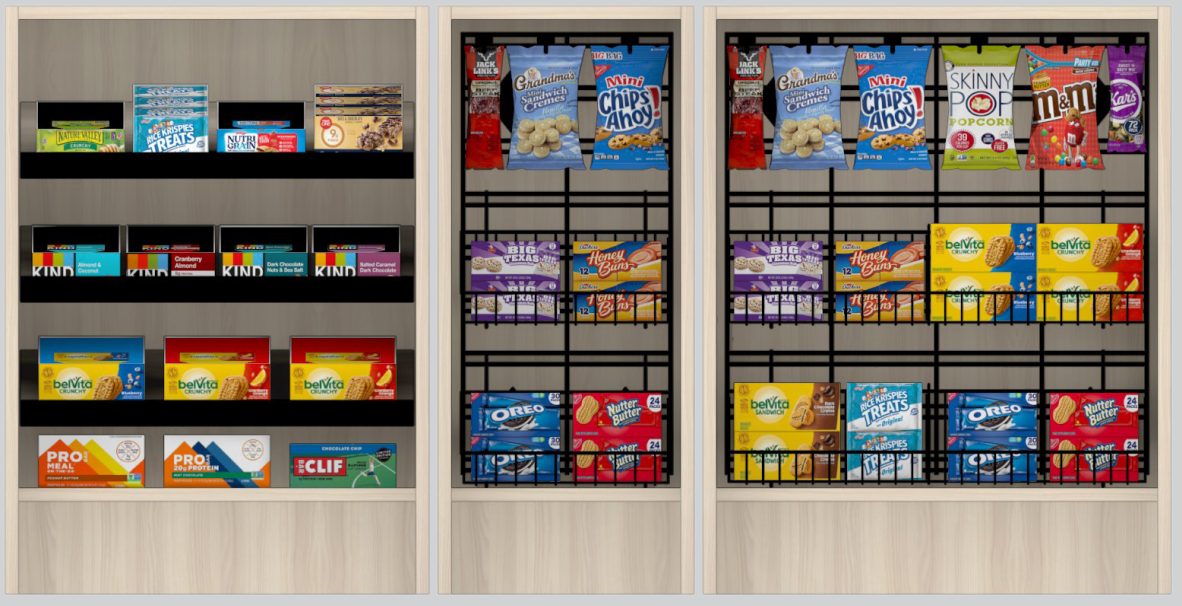


OCS Open Storage Modules

Open storage modules are available in two styles: line-bored adjustable shelves or slatgrid panels with baskets and pegs.

The shelf module includes three adjustable shelves with offset trim. Shelves with lexan stops also are available. The shelves may be slanted or flat.

The modules with slatgrid panels in the back are available in two sizes: 14.5"W includes two 12"W baskets and three 12" pegs, and 26.5"W includes two 24"W baskets and six 12" pegs. Baskets, pegs and shelving may be added/adjusted as needed.



OCS Cup Dispenser Modules

These modules include lower locking storage with one adjustable shelf and options for one or two cup dispensers.



OCS Condiment Modules

These modules include lower locking storage with one adjustable shelf. Two sizes with a black four-compartment black plastic cutlery bin or three stainless steel table bins.



Deck Out Your Markets with These Accessories!

We offer a variety of options to accessorize any area décor ... from snack displays to cubby units, lighting and much more. Contact your sales representative for details or to customize any of our products.

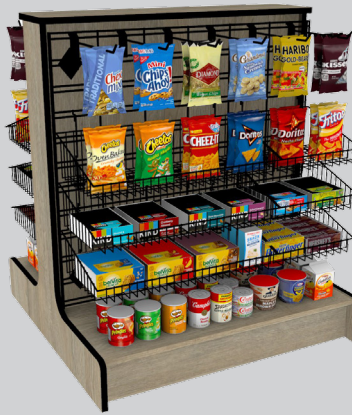
Snack Grids

Simple one-sided snack grids are available in three widths (25"W, 37"W and 49"W) and variable heights. They come with 12" pegs, 12"W and/or 24"W baskets depending on the size of the grid, and/or shelves.



Snack Islands

Two-sided snack islands are available in three widths (25"W, 37"W and 49"W) and variable heights. They come with 12" pegs, 12"W and/or 24"W baskets depending on the size of the grid, and/or shelves.



Display Tower

The Display Tower, measuring 48"W x 48"D x 54"H, includes four levels of tiered shelves with lexan stops. It's packed for shipping but is easily assembled.



Gondolas

Four-sided gondolas are available in 32"W and 42"W versions. The 32"W holds 12"W baskets while the 42"W holds 24"W baskets. Both include 12" pegs. Shelves may be added upon request. Slatwall versions also are available.

Be aware: these ship assembled and may be difficult to fit through doors and hallways.



Countertop Stands and Island Counters

Two-sided island countertop units come in a variety of sizes and include adjustable shelves.

Add a countertop snack unit for additional merchandising.



Trash Units

Trash units are available in single (22.5"W) and double (44.25"W) versions, both are 22.125"D x 37"H. They include 6" grommet holes above each trash liner. The liners are sized to fit precisely, ensuring no trash falls to the bottom of the cabinet.

Recycle? Change the vinyl "TRASH" decal as needed.



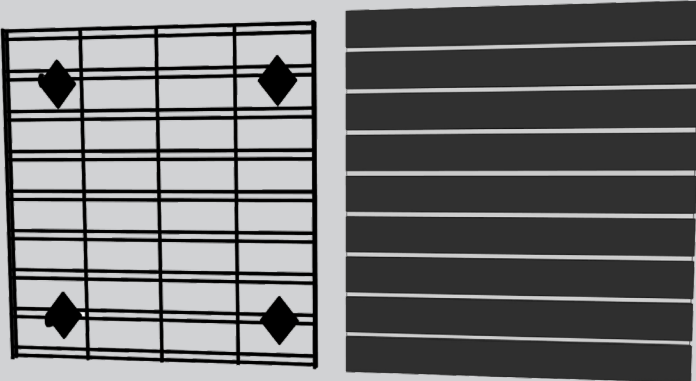
Microwave Stands and Cabinets

Our lines of cabinetry each have matching microwave cabinets. We also offer a variety of countertop stands at 42"H and vending décor cabinets at 72"H. Single- and double-wide versions with or without locking storage are available. Most include black cutlery/condiment bins.



Slatgrid and Slatwall

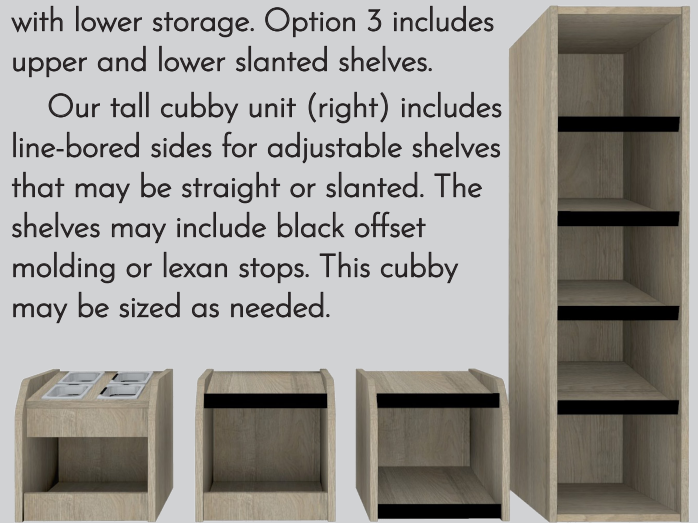
Slatgrid or slatwall comes standard in the backs of snack cabinets to hang pegs, baskets and shelves. Slatgrid or slatwall may be installed in the upper backs of kiosk and coffee cabinets as well. Slatgrid panels come in 12"W, 24"W and 36"W versions and may be cut to height in 3" increments. Slatwall has aluminum inserts for extra durability.



Countertop Cubby Units

We offer a variety of countertop cubby units. Option 1 (left) includes four 4.25" x 7" stainless steam table bins on a slanted shelf with lower storage. Option 2 includes an upper slanted shelf with lower storage. Option 3 includes upper and lower slanted shelves.

Our tall cubby unit (right) includes line-bored sides for adjustable shelves that may be straight or slanted. The shelves may include black offset molding or lexan stops. This cubby may be sized as needed.



Lighting

Puck lights may be requested in kiosk, coffee, microwave and snack cabinets. Multiple pucks may be linked together using a splitter for wider cabinets. All required hardware and a power supply are included with each lighted cabinet.



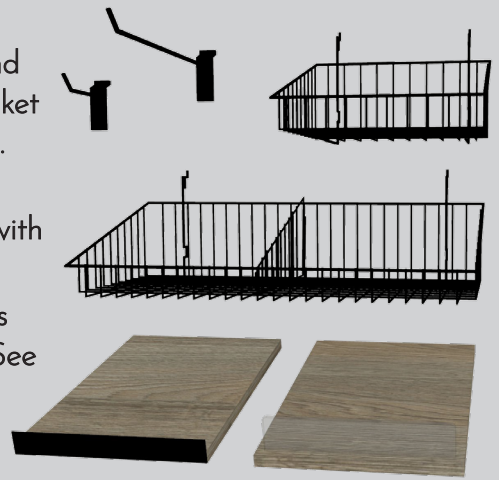
Pegs, Baskets, Shelves, Dividers and Pushers

Pegs are available at 4" and 12".

Baskets are available in 12"W and 24"W (both are 12"D and 6"H). Basket dividers are available upon request.

Shelves may include black offset molding or lexan stops, and come with slantable hanging brackets.

A variety of dividers and pushers (not shown) are available as well. See our Web site or ask your sales representative for details.



Header Graphics for Micro Market Cabinetry

Our six standard designs – Black, Bright, Chalk, Parchment, Two-Color and Whitewash – are consistent across all lines of cabinetry, each offering two options for wording. To magnify these images, visit our Web site.

Black

The Black design has been a staple at Genesis for many years. Get this design with Graphics, Motifs, or just white lettering.

checkout	Drop a Dime
recharge	Pour a Cup
refuel	Take a Break
refresh	Twist a Cap
restore	Grab a Bite
revive	Make a Meal
replenish	Sip & Savor
renew	Heat it Up

checkout	Drop a Dime
recharge	Pour a Cup
refuel	Take a Break
refresh	Twist a Cap
restore	Grab a Bite
revive	Make a Meal
replenish	Sip & Savor
renew	Heat it Up

checkout	Drop a Dime
recharge	Pour a Cup
refuel	Take a Break
refresh	Twist a Cap
restore	Grab a Bite
revive	Make a Meal
replenish	Sip & Savor
renew	Heat it Up

Bright

Bring a pop of color into the space with this option available with Graphics, Motifs, or just white lettering.

CHECKOUT	DROP A DIME
RECHARGE	POUR A CUP
REFUEL	TAKE A BREAK
REFRESH	TWIST A CAP
RESTORE	GRAB A BITE
REVIVE	MAKE A MEAL
REPLENISH	SIP & SAVOR
RENEW	HEAT IT UP

CHECKOUT	DROP A DIME
RECHARGE	POUR A CUP
REFUEL	TAKE A BREAK
REFRESH	TWIST A CAP
RESTORE	GRAB A BITE
REVIVE	MAKE A MEAL
REPLENISH	SIP & SAVOR
RENEW	HEAT IT UP

CHECKOUT	DROP A DIME
RECHARGE	POUR A CUP
REFUEL	TAKE A BREAK
REFRESH	TWIST A CAP
RESTORE	GRAB A BITE
REVIVE	MAKE A MEAL
REPLENISH	SIP & SAVOR
RENEW	HEAT IT UP

Chalk

With a chalkboard background and chalk lettering, this design is available with Graphics, Motifs, or just white lettering.

CHECKOUT	DROP A DIME
RECHARGE	POUR A CUP
REFUEL	TAKE A BREAK
REFRESH	TWIST A CAP
RESTORE	GRAB A BITE
REVIVE	MAKE A MEAL
REPLENISH	SIP & SAVOR
RENEW	HEAT IT UP


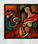
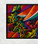
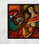

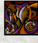
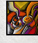

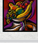
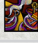
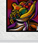

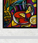
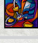
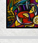
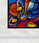
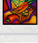
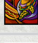
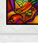
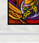
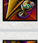
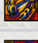
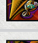
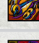
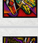
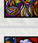
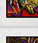
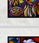
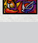
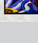
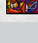

CHECKOUT	DROP A DIME
RECHARGE	POUR A CUP
REFUEL	TAKE A BREAK
REFRESH	TWIST A CAP
RESTORE	GRAB A BITE
REVIVE	MAKE A MEAL
REPLENISH	SIP & SAVOR
RENEW	HEAT IT UP

CHECKOUT	DROP A DIME
RECHARGE	POUR A CUP
REFUEL	TAKE A BREAK
REFRESH	TWIST A CAP
RESTORE	GRAB A BITE
REVIVE	MAKE A MEAL
REPLENISH	SIP & SAVOR
RENEW	HEAT IT UP

Many of our cabinets may not be wide enough to accommodate the motif graphics so the headers may include a mixture of words only and words with motifs. Only Graphics and Words Only versions are available for the Elite line of cabinetry as the sign panels are not wide enough to accommodate the motifs.

Parchment

This version has a parchment background, bold black lettering and is available with Graphics, Motifs, or just black lettering.

 checkout 	 Drop a Dime 
 recharge 	 Pour a Cup 
 refuel 	 Take a Break 
 refresh 	 Twist a Cap 
 restore 	 Grab a Bite 
 revive 	 Make a Meal 
 replenish 	 Sip & Savor 
 renew 	 Heat it Up 

checkout	Drop a Dime
recharge	Pour a Cup
refuel	Take a Break
refresh	Twist a Cap
restore	Grab a Bite
revive	Make a Meal
replenish	Sip & Savor
renew	Heat it Up

checkout	Drop a Dime
recharge	Pour a Cup
refuel	Take a Break
refresh	Twist a Cap
restore	Grab a Bite
revive	Make a Meal
replenish	Sip & Savor
renew	Heat it Up

Two-Color

This design is available with a black or white background. Teal is standard but may be substituted with any color choice.

Checkout	Drop a Dime
Recharge	Pour a Cup
Refuel	Take a Break
Refresh	Twist a Cap
Restore	Grab a Bite
Revive	Make a Meal
Replenish	Sip & Savor
Renew	Heat it Up

Checkout	Drop a Dime
Recharge	Pour a Cup
Refuel	Take a Break
Refresh	Twist a Cap
Restore	Grab a Bite
Revive	Make a Meal
Replenish	Sip & Savor
Renew	Heat it Up

Whitewash

With a whitewash wood-look background and engraving-style lettering, this design is available with Motifs or just the lettering.

 CHECKOUT 	 DROP A DIME 
 RECHARGE 	 POUR A CUP 
 REFUEL 	 TAKE A BREAK 
 REFRESH 	 TWIST A CAP 
 RESTORE 	 GRAB A BITE 
 REVIVE 	 MAKE A MEAL 
 REPLENISH 	 SIP & SAVOR 
 RENEW 	 HEAT IT UP 

CHECKOUT	DROP A DIME
RECHARGE	POUR A CUP
REFUEL	TAKE A BREAK
REFRESH	TWIST A CAP
RESTORE	GRAB A BITE
REVIVE	MAKE A MEAL
REPLENISH	SIP & SAVOR
RENEW	HEAT IT UP

Need Custom Graphics?

Add a logo or let us create a custom design for your markets. An additional charge may apply. Contact your sales representative for details.



Vending Area Décor – Spruce Them Up!

Bring your vending installations to life with our custom-built furniture-grade surrounds.

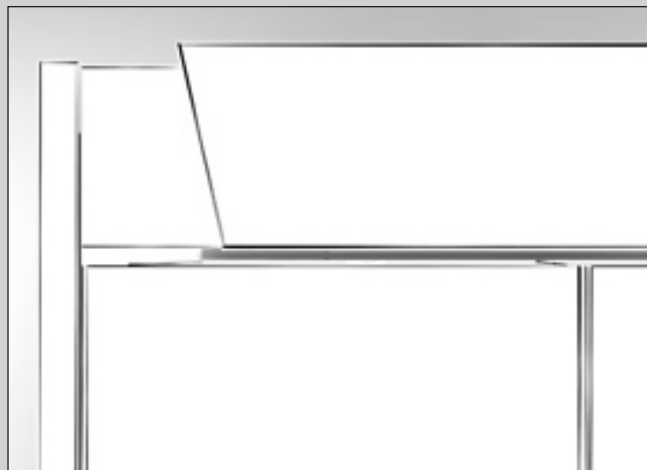
Our recently redesigned vending décor is engineered for flexibility with a wide variety of graphics options. Firm up existing contracts with updated looks or use our renderings and products to secure longer-term contracts with new locations.

Flexibility is integrated. The hanging signs cover gaps in the header back panels, allowing expansion of each section of the décor. Order an additional back panel and sign to expand even further.

Columns (as shown) or single panels separate each section of machines. Microwave cabinets may be added as needed. See Page 15 for information about our microwave options.

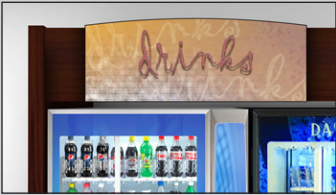
Need Custom Graphics?

Use the variety of sign panel shapes and graphics options available for vending or we will create graphics to meet your needs. An additional charge may apply. Contact your sales representative for details.



A Wide Variety of Graphics Options for Vending!

Artsy



Chalkboard



Colors



Diamond



Frosted Glass



Logo



Metal



Upscale



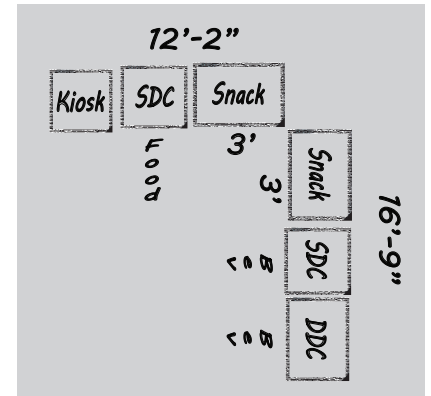
Submitting Rendering/Quote Requests

We provide renderings and dimensioned layouts free of charge. When submitting requests for renderings and/or quotes, please provide the project/location name, décor line, color(s), graphics choice, install date (if known), and the space available for the installation (width, height, and depth).

List or draw the cabinets and coolers in the order/position needed for the rendering/quote. Be sure to specify single- and/or double-door coolers (SDC, DDC) and their contents (Bev, Food, Frozen). Standard SDCs are 30"W and DDCs 54"W. We allow 1" extra. If the coolers are different dimensions or a lockout requires more space, please advise.

Be aware of low ceilings, sprinkler heads, heating ducts, doorway limits, etc. Sending pictures of the space is helpful.

Submit the information via e-mail to your sales representative or contact us at 804-561-4844.



Tyler Glanzman, Sales Manager (left), and Wil Arrington, Director of Sales, representing Genesis Décor at NAMA 2023.

Genesis Décor
Creating Breakroom Environments

15401 Goodes Bridge Road • P.O. Box 188 • Amelia, Virginia 23002

Phone: (804) 561-4844 • Fax: (804) 561-4442

www.GenesisDecor.com

Our team is available Monday to Thursday from 7 am until 5:30 pm eastern.

We are closed on Fridays.