

### Assembly and Installation Instructions



These instructions cover a wide range of layouts. This install may not contain all the elements shown. Use the layout provided for the install.

There are three basic elements of the vending area décor: the header back panels, the signs, and the panels or columns.

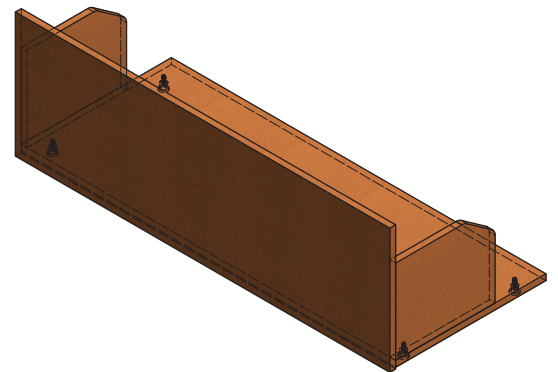
#### — Header Back Panel Assembly —

The header back panels consist of a base and a front that are connected with hinges, and either one or two gussets depending if the panel is for left, center, or right side installation.

Unfold each back panel assembly and install the levelers into the threaded inserts located in the bottom of the back panel assembly.

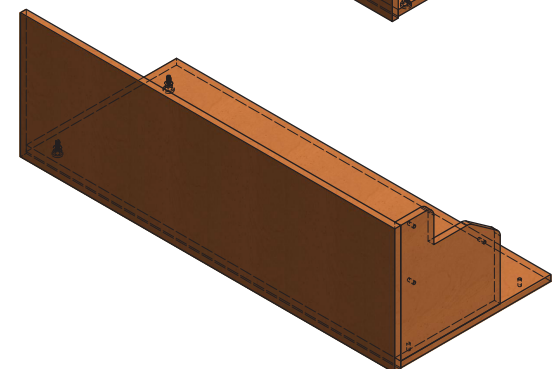
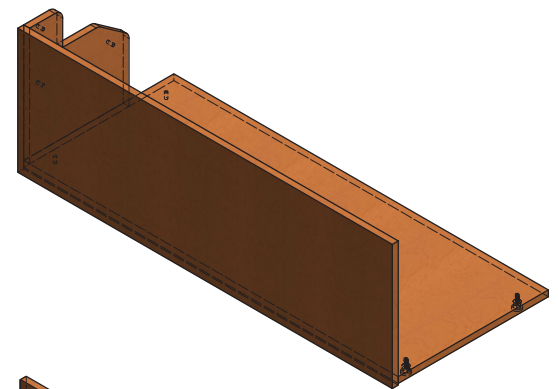
Use the 1-1/4" button head screws to attach the gussets in the pre-drilled holes. Center panels will have a gusset for each end that does not extend to the top of the header ensuring the gusset does not interfere with hanging the sign panels.

**All screws should be tightened until snug, do not over tighten!**



Center Header Back Panel

Left and Right Header Back Panels



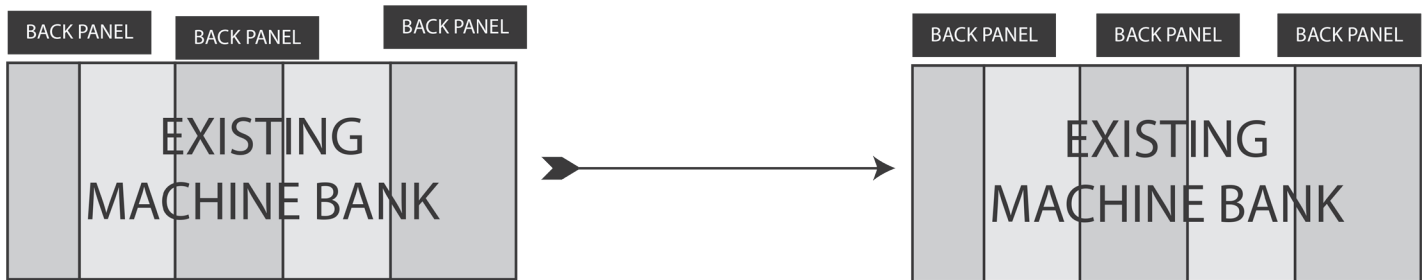
## Align and Level the Vending Equipment

Align the fronts and level the tops of the vending equipment. Be sure to insert any center columns or panels where indicated on the layout provided with the order.



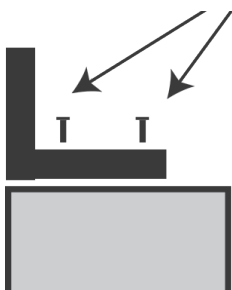
Spread the back panels out in front of the machines to get an idea of the proper spacing and layout as marked. Lift the back panels onto the tops of the machines. **Back panels present a danger of falling until secured to machines. Use caution!** The left edge of the left panel should be even with the left edge of the machine bank. The right edge of the right panel should be even with the right edge of the machine bank. Any remaining center panels should be spaced evenly between the panels/columns.

Using a string line or level, align all back panels across their fronts and tops. Levelers can be adjusted if necessary to clear obstructions.



## Attach the Panels or Columns

Lift the panels or columns into position according to the layout provided. Secure them to the left and right header back panels using the 5" bolts and wing nuts provided. Bottoms of the end panels can be secured to machines using double stick tape or screws. Make sure screws will not damage anything inside machines!



## Secure the Header Back Panels

Once all panels are properly aligned, use the 3" silver threaded screws to secure units to the tops of machines. **This is vital to secure the overall header!!** Make sure that the screws will not damage anything inside the machines!

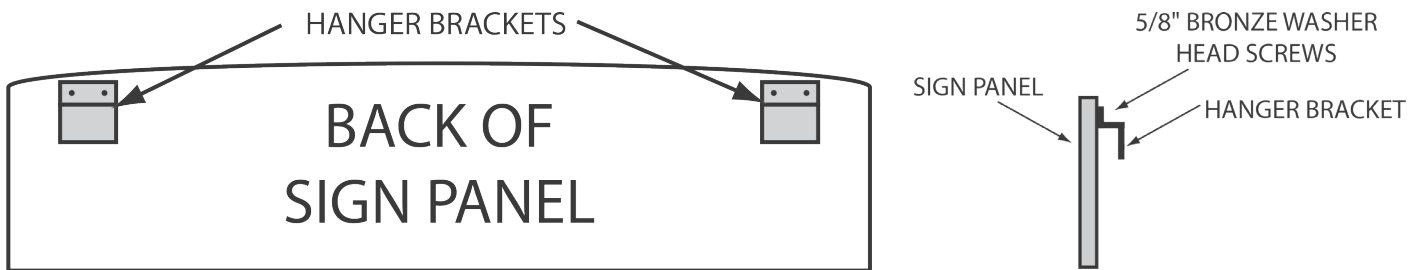
**All screws should be tightened until snug, do not over tighten!**

---

## Hang the Signs

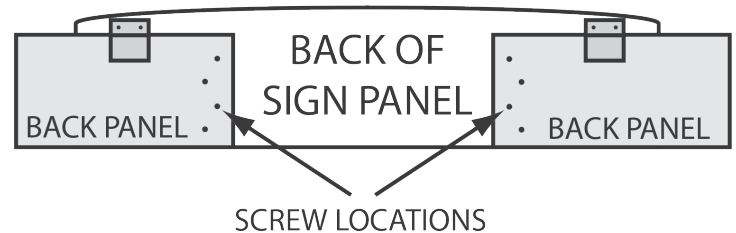
---

Attach hanger brackets to the back side of the sign(s) using the 5/8" bronze washer screws. Screws should be placed into the existing holes.



Hang the sign(s) onto the bank of back panels using the hangers and adjust the spacing as desired.

Once signs are in proper alignment, secure to back panels by screwing through the back of the back-panel face and into the backs of sign panels using the 1 1/4" silver washer head screws. At least four screws should be used at each end of the back panels as shown.



**All screws should be tightened until snug, do not over tighten!**

Using the black plastic provided, drape over the bases of the back panels to prevent light from shining down onto machine tops. Plastic may be taped into place.

**As a last step of any installation, please ensure all columns, panels, headers, signs and machines are braced securely. We strive to include all necessary instructions and hardware but it is the responsibility of the installer to ensure the cabinetry has been secured properly.**

---

**Genesis Décor**  
*Creating Breakroom Environments*

---

We specialize in designing and manufacturing durable, attractive, and easily installed area décor and cabinetry for micro market, office coffee service, and vending areas. We make your installation not only beautiful, but quick and easy because our units are shipped 90% pre-assembled. Contact our sales manager, Wilson Arrington, at [wilarrington@genesisdecor.com](mailto:wilarrington@genesisdecor.com) for additional information.